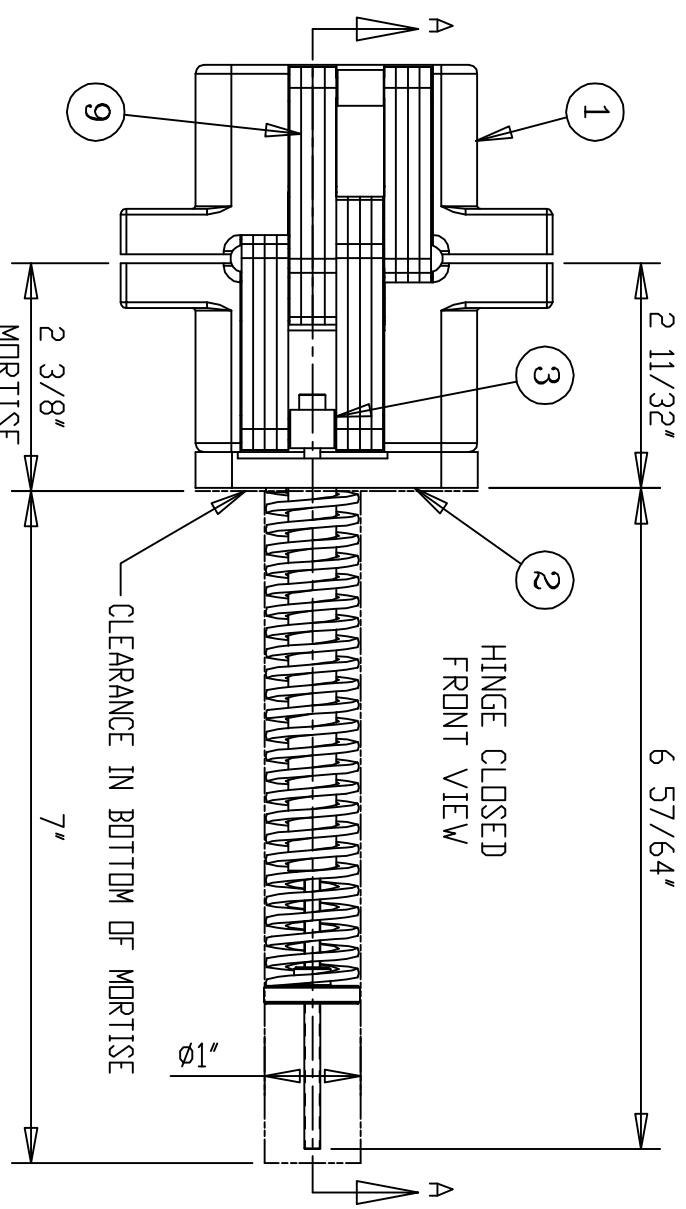
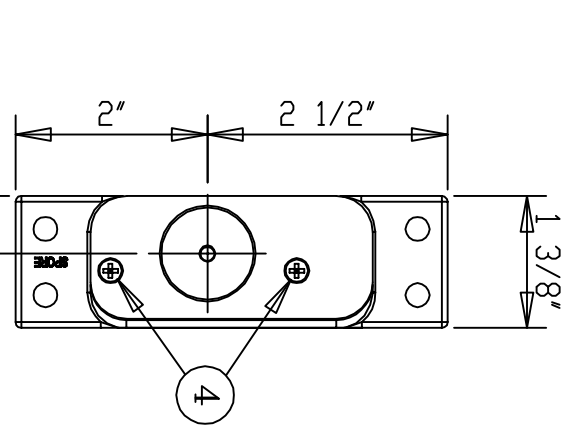


HINGE OPEN 180°

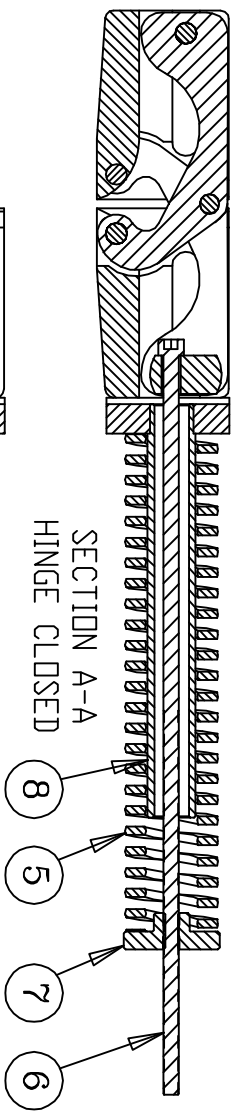


HINGE CLOSED  
FRONT VIEW

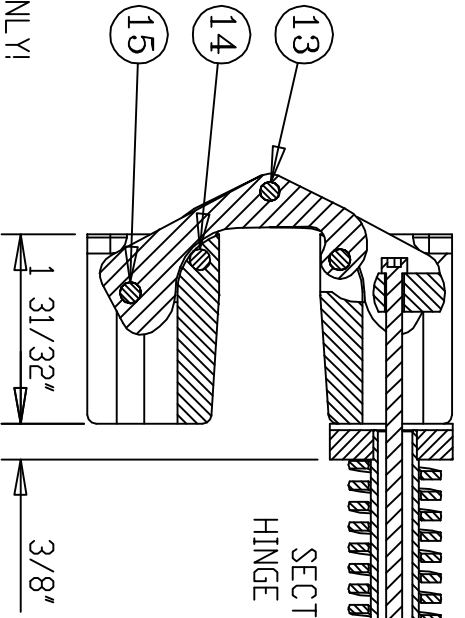


NO.	QTY.	PART NAME	MATERIAL
1	2	HINGE BODY	ALLOY STEEL
2	1	BACK PLATE	STEEL
3	1	SLIDE	STEEL
4	2	FLAT HEAD SCREW	STEEL
5	1	SPRING	STEEL
6	1	CAP SCREW	STEEL
7	1	RETAINER	STEEL
8	1	GUIDE TUBE	STEEL
9	16	LINK	STEEL
10	2	SHORT ROLLER	STEEL
11	1	LONG ROLLER	STEEL
12	2	SPACER	STEEL
13	1	RIVET PIN	STEEL
14	2	LONG PIN	STEEL
15	1	CHANNEL PIN	STEEL

SUPPLIED:  
WOOD SCREW  
#12-24 X 1"



SECTION A-A  
HINGE CLOSED



SECTION A-A  
HINGE OPEN 180°

DO NOT SCALE DRAWING  
ALL DIMENSIONS ARE IN INCH  
MIN. WOOD THICKNESS IS 2"  
UL FIRE RATING FOR FIRE RATED DOORS ONLY!  
FOR BODY DIMENSIONS SEE #420 HINGE TEMPLATE DRAWING

B	5/7/15	ADDED GUIDE TUBE	LHH
A	5/12/13	REDRAWN	SRD
REV	DATE	DESCRIPTION	BY
		SCALE: 1/2 = 1	
Universal Industrial Products, Inc. One Coreway Drive Pioneer, Ohio 43554-0628		DRAWN BY: LHH	
SELF-CLOSING HINGE TEMPLATE		DATE: 5/07/15	
#420IC SELF-CLOSING		DRAWING # 420	
SOSS INVISIBLE HINGE		IC	