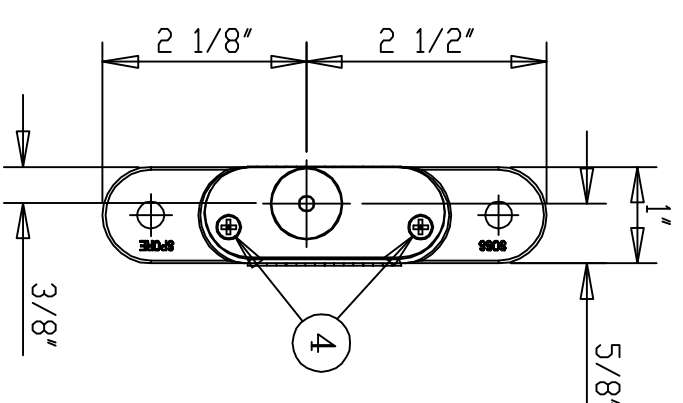
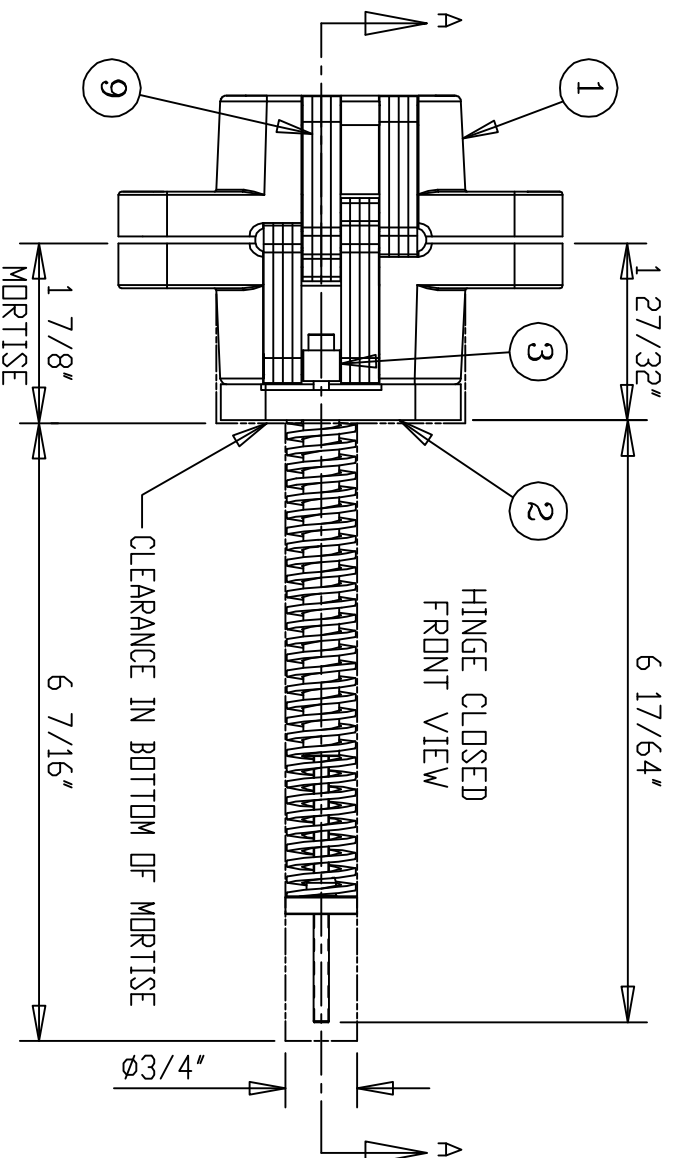


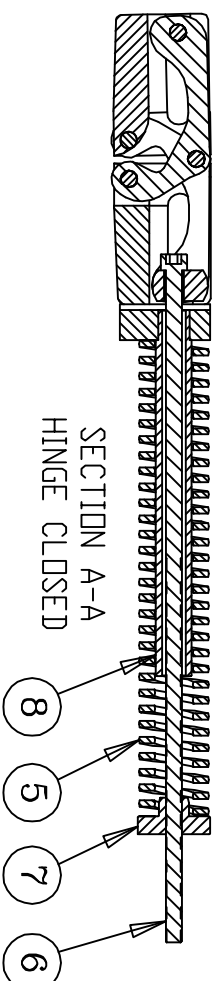
HINGE OPEN 180°



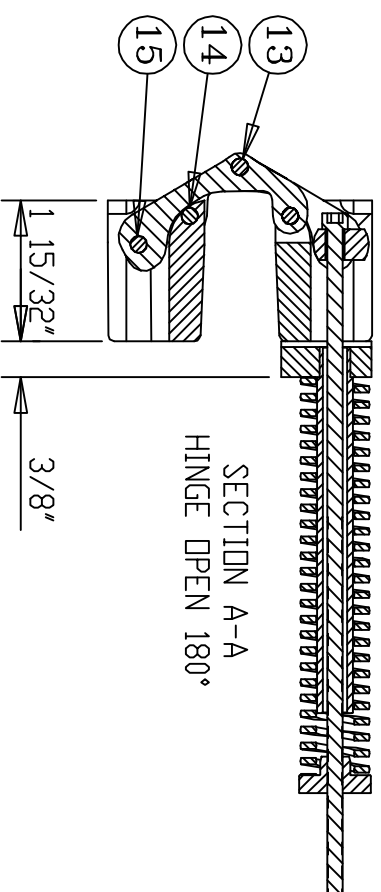
| NO. | QTY. | PART NAME | MATERIAL |
|-----|------|-----------------|---------------------|
| 1 | 2 | HINGE BODY | 316 STAINLESS STEEL |
| 2 | 1 | BACK PLATE | STEEL |
| 3 | 1 | SLIDE | STEEL |
| 4 | 2 | FLAT HEAD SCREW | STEEL |
| 5 | 1 | SPRING | STEEL |
| 6 | 1 | CAP SCREW | STEEL |
| 7 | 1 | RETAINER | STEEL |
| 8 | 1 | GUIDE TUBE | STEEL |
| 9 | 16 | LINK | 316 STAINLESS STEEL |
| 10 | 2 | SHORT ROLLER | STAINLESS STEEL |
| 11 | 2 | LONG ROLLER | STAINLESS STEEL |
| 12 | 1 | CENTER ROLLER | STAINLESS STEEL |
| 13 | 1 | RISET PIN | STAINLESS STEEL |
| 14 | 2 | LONG PIN | STAINLESS STEEL |
| 15 | 1 | CHANNEL PIN | STAINLESS STEEL |

SUPPLIED:
WOOD SCREW MACHINE SCREW
#14 x 2-1/2" 1/4-20 x 1"

DO NOT SCALE DRAWING
ALL DIMENSIONS ARE IN INCH
MIN. MATERIAL THICKNESS IS 1-3/8"
FOR BODY DIMENSIONS SEE #416 HINGE TEMPLATE DRAWING



SECTION A-A
HINGE CLOSED



SECTION A-A
HINGE OPEN 180°

| REV | DATE | DESCRIPTION | BY |
|-----|---------|------------------|-----|
| B | 5/7/15 | ADDED GUIDE TUBE | LHH |
| A | 5/12/13 | REDRAWN | SRD |

UIIP ©Copyright
Universal Industrial Products, Inc.
One Coreway Drive
Pioneer, Ohio 43554-0628

SCALE: 1/2 = 1
DRAWN BY: LHH

SELF-CLOSING HINGE TEMPLATE DATE: 5/07/15

#416SSIC SELF-CLOSING
SDSS INVISIBLE HINGE DRAWING # 416
SSIC