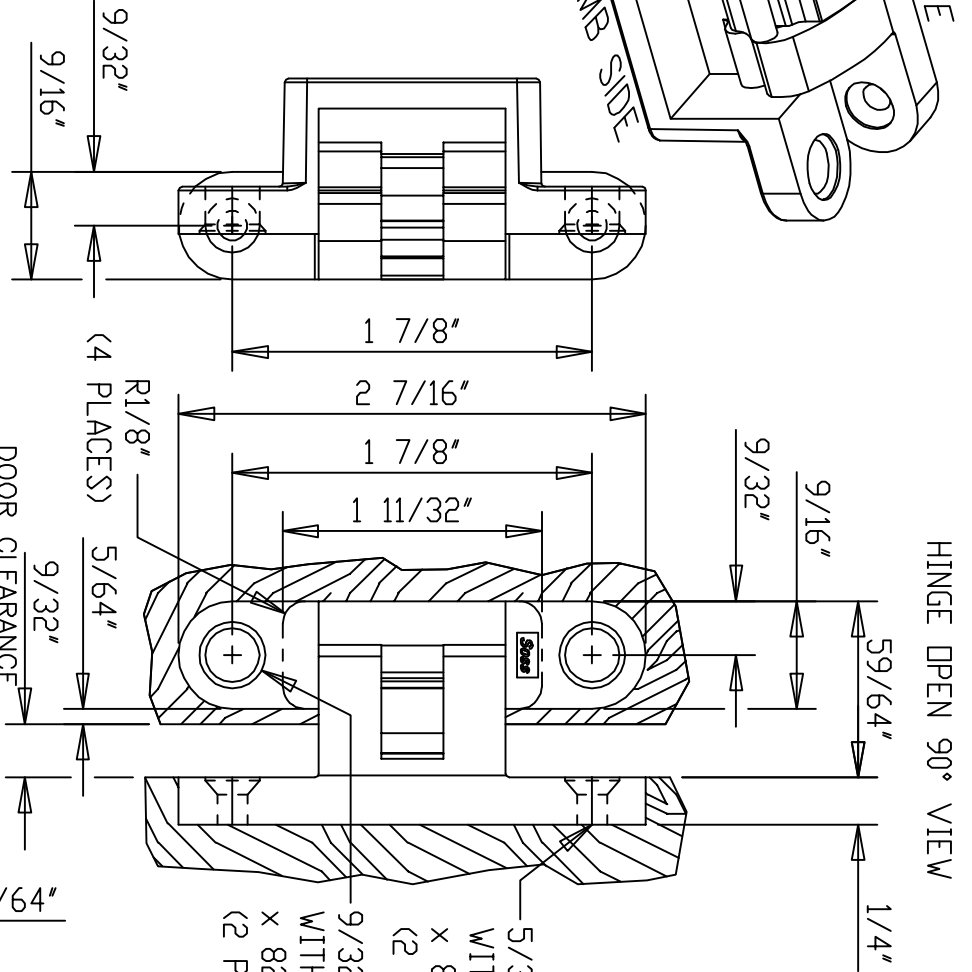
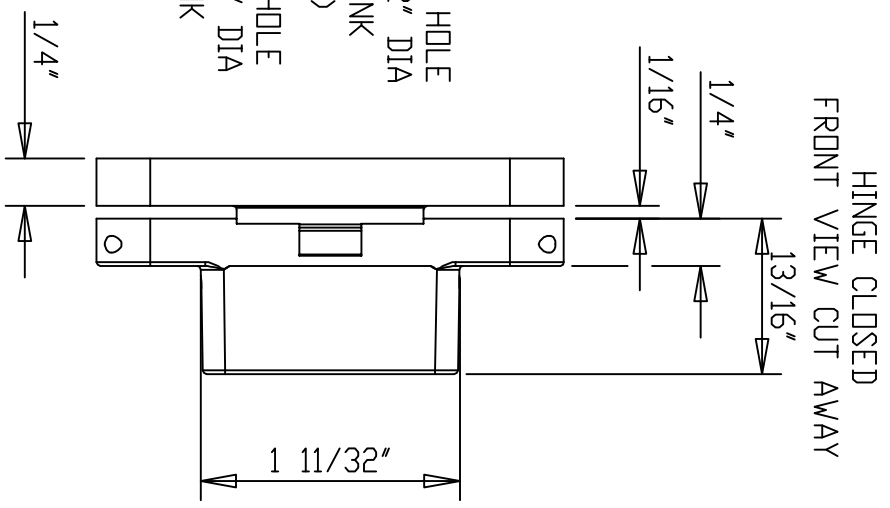


HINGE OPEN 90°
ISOMETRIC VIEW



HINGE OPEN 90° VIEW

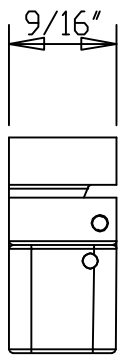
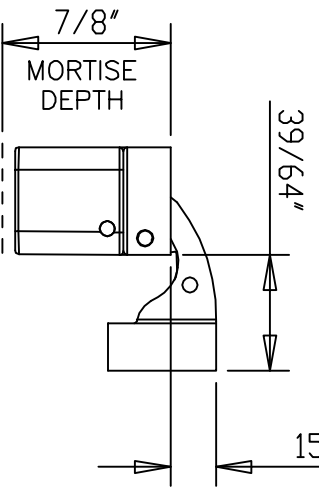


HINGE CLOSED FRONT VIEW CUT AWAY

MATERIALS

DOOR SIDE = STEEL
FASTENER = #6 X 1"
JAMB SIDE = ZINK ALLOY
FASTENER = #8 X 1"

DOOR OPEN 92° MAX
MIN. MATERIAL THICKNESS IS 3/4"
DO NOT SCALE DRAWING
ALL DIMENSIONS ARE IN INCH
DOOR CLEARANCE REDUCES TO 1/64" WHILE CLOSING



HINGE CLOSED TOP VIEW CUT AWAY

<p>©Copyright Universal Industrial Products, Inc. One Corey Drive Floren, Ohio 43594-0628</p>	SCALE: 1 = 1
	DRAWN BY: LHH
HINGE TEMPLATE	DATE: 06/07/21
SSSS INVISIBLE HINGE 504 HINGE	DRAWING # 504